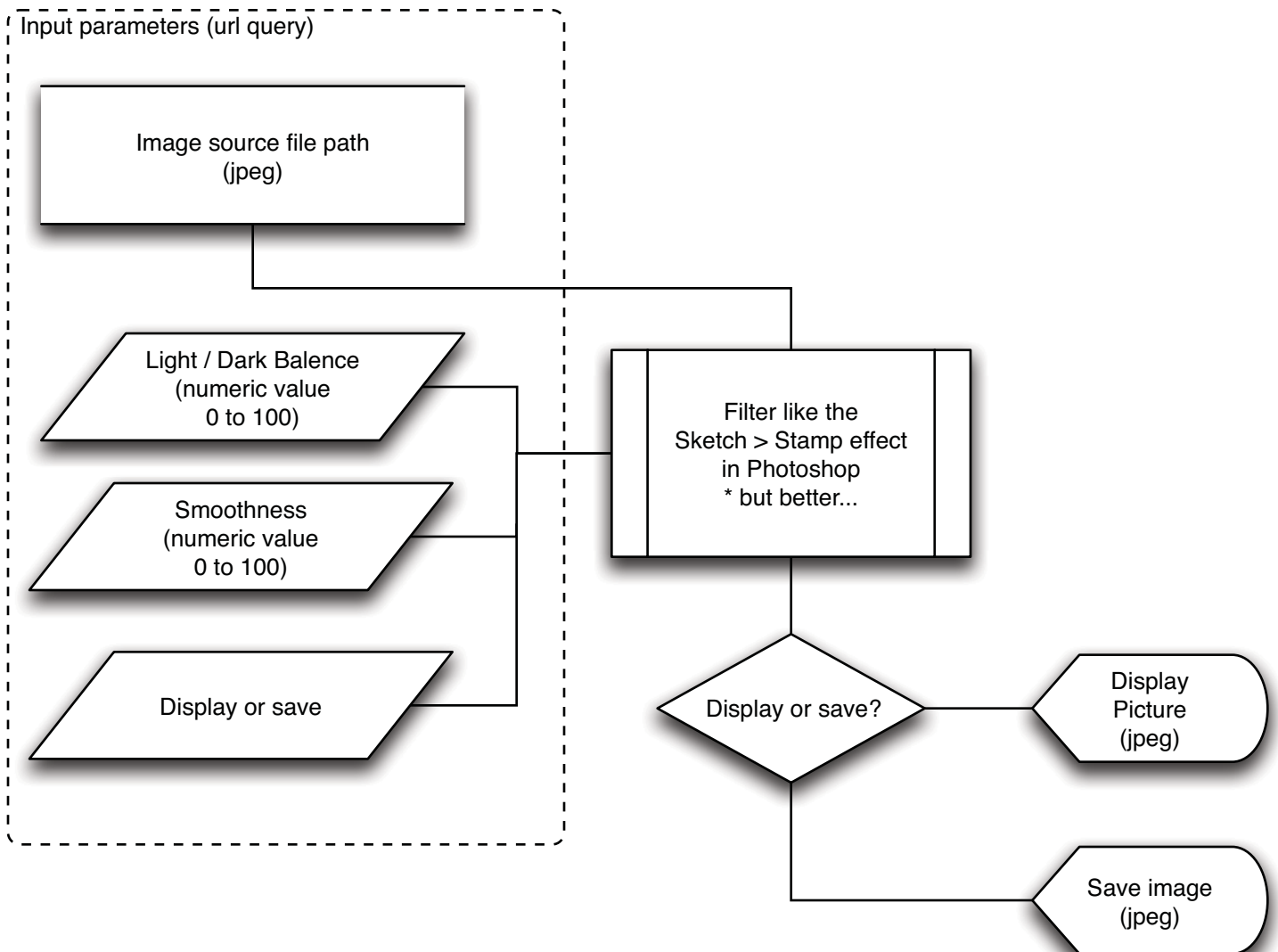


Stamp effect image filter



Effect like I want to do (in Photoshop):

1. Sketch > Stamp
2. Select color black
3. Expand selection 1px (variable)
4. Smooth selection 7 px (variable)
5. Feather the selection 1px (variable)
6. Paint the the selection in black
7. Put on a white background
8. Paint in black any white area that are less than (x pixels square)
9. Paint in white any black area that less than (x pixels square)

Something like that

Original image (6 megapixel minimum)



Result at step 1



Result at step 7

